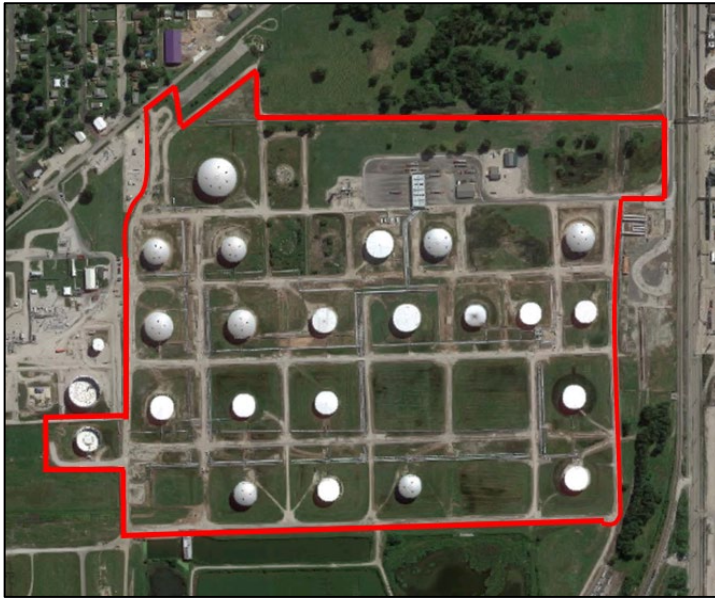


# Wood River Terminal



*Delivering Energy To Improve Lives And Create A Better World*

## Terminal Specifications

- ❑ 113 acres located
- ❑ 21 tanks ranging in size from 48,577 barrels to 204,584 barrels with a total storage capacity of 1,947,578 barrels

## Commodities Handled

- ❑ Petroleum and Ethanol

## Access

- ❑ Highway access from Interstates 255, 55 and 270 and Highways 3, 111 and 143
- ❑ Receiving Pipelines: Marathon, Explorer and Phillips 66
- ❑ Injecting Pipelines: BP / Marathon

## Terminal Services

- ❑ Loading and Unloading Services by Tank Truck
- ❑ Pipeline Receipt / Injection
- ❑ Automated Truck Rack
- ❑ Product Storage
- ❑ Vapor Recovery / Vapor Combustion
- ❑ KMT Laboratory Testing
- ❑ Additional Services Available

### Terminal Address

1000 BP Lane  
Hartford, IL 62048  
618-254-0694



### Business Address

One Terminal Road  
Carteret, NJ 07008  
732-541-5161

*Kinder Morgan provides energy transportation and storage services in a safe, efficient and environmentally responsible manner for the benefit of people, communities and businesses*