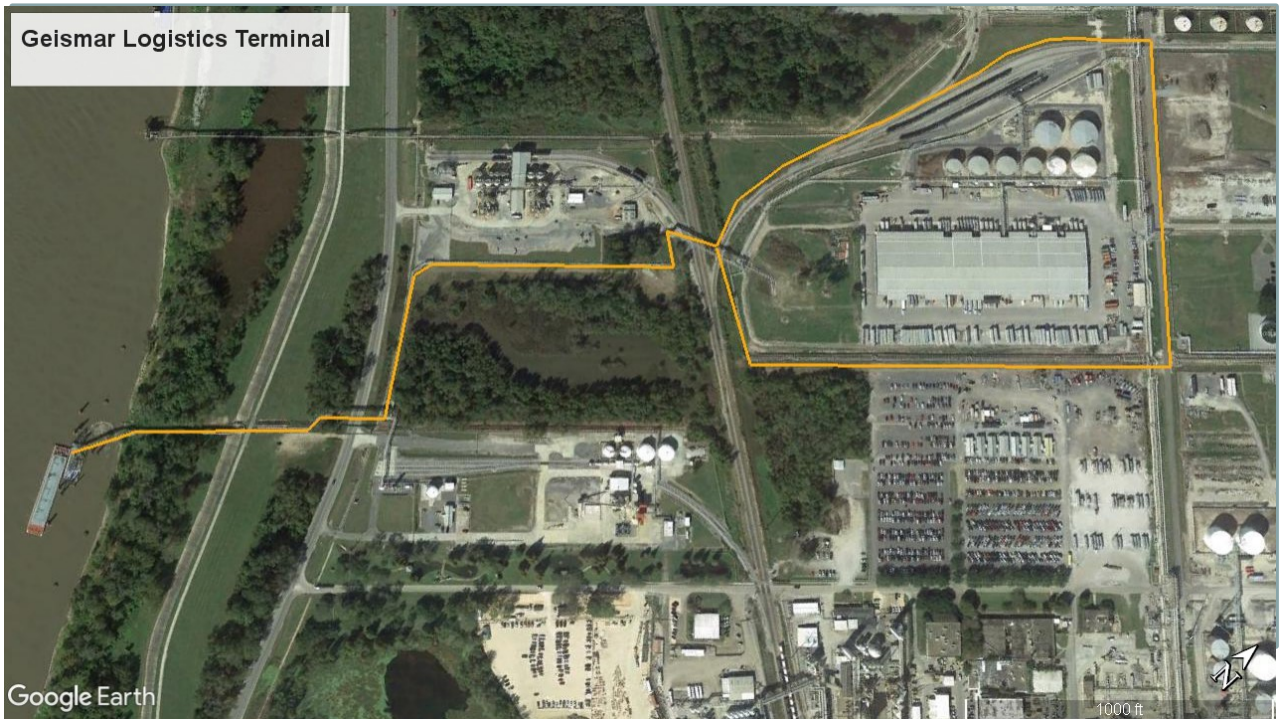


# Geismar Logistics Terminal (GLT)



## Terminal Specifications

|                        |                         |
|------------------------|-------------------------|
| Size                   | 32 Acres                |
| Total Storage Capacity | 203,849 bbls            |
| No. of Tanks           | 11                      |
| Range of Tanks         | 254 bbls to 40,000 bbls |
| No. of Ship Docks      | 1                       |
| No. of Barge Docks     | 2                       |
| Commodities Handled    | Chemicals               |

## Transportation Modes

|                          |  |
|--------------------------|--|
| Servicing Body of Water  | Mississippi River                        |
| Servicing Railroads      | CN Railroad                              |
| Servicing Major Roadways | I-10, LA Hwy. 73, LA Hwy. 30, LA Hwy. 75 |

# Geismar Logistics Terminal

## Terminal Services

- Vessel Loading / Unloading
- Barge Loading / Unloading
- Tank Truck Loading / Unloading
- Bulk Liquid Storage
- Warehousing
- Tank Car Loading / Unloading
- Drumming Services
- Package Filling

## Contact Information

### Terminal Address

4268 Hwy 73  
Geismar, LA 70734  
225-677-5108

Terminal Manager: Mike Sasich

### Business Address

1406 W. Highway 30  
Gonzales, LA 70737  
225-621-0350

