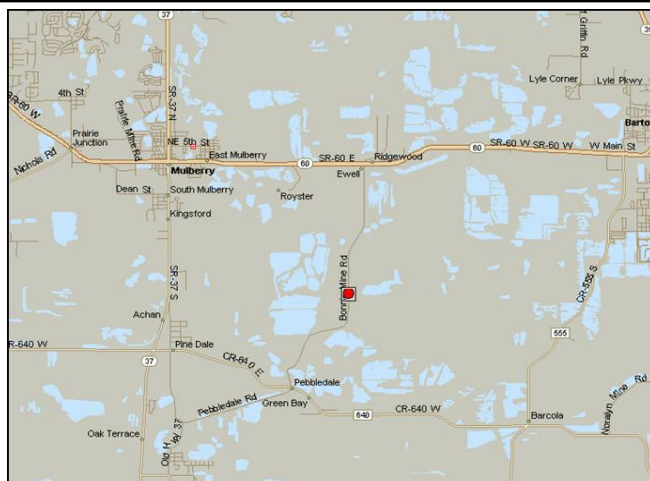


Central Florida Terminal



Delivering Energy To Improve Lives And Create A Better World

Terminal Specifications

- ❑ 37 acres
- ❑ Three (3) warehouses totaling 75,000 tons of storage

Commodities Handled

- ❑ Rail: Potassium Chloride (MOP), Potassium Magnesium (KMag 3 grades), Potassium Sulphate (SOP 4 grades), Ammonium Sulfate (3 grades), Urea, Granular Triple Super Phosphate
- ❑ Truck: Urea, Potassium Chloride (MOP), Granular Triple Super Phosphate (GTSP), Diammonium Phosphate (DAP), Micronutrients, Calcium Ammonium, Nitrate (CAN) and 21-0-21, Potassium Sulfate

Access

- ❑ Highway access from Highway 60 and State Road 37
- ❑ Rail Access from CSX

Terminal Services

- ❑ Rail to Storage / Storage to Rail
- ❑ Truck to Storage / Storage To Truck
- ❑ Super Sac Bagging
- ❑ 2 Rail Loading Stations with State Certified Scales
- ❑ 2 Truck Scales

Major Features

- ❑ Truck Unloading Rates – 150 TPH
- ❑ Truck Loading Rates - 150 TPH
- ❑ Rail Unloading Rates - Single Dump – 100 TPH
- ❑ Rail Trackage - 52 Car Capacity
- ❑ 1 Rail Pit
- ❑ 1 Trackmobile
- ❑ 1 Bagging Conveyor for Super Sacs

Terminal Address

2501 Bonnie Mine Rd
Bartow, FL 33830
863-533-2463



Business Address

1406 West Highway 30
Gonzales, LA 70737
225-675-5387

Kinder Morgan provides energy transportation and storage services in a safe, efficient and environmentally responsible manner for the benefit of people, communities and businesses