



Bridge Project Fact Sheet

Project Overview:

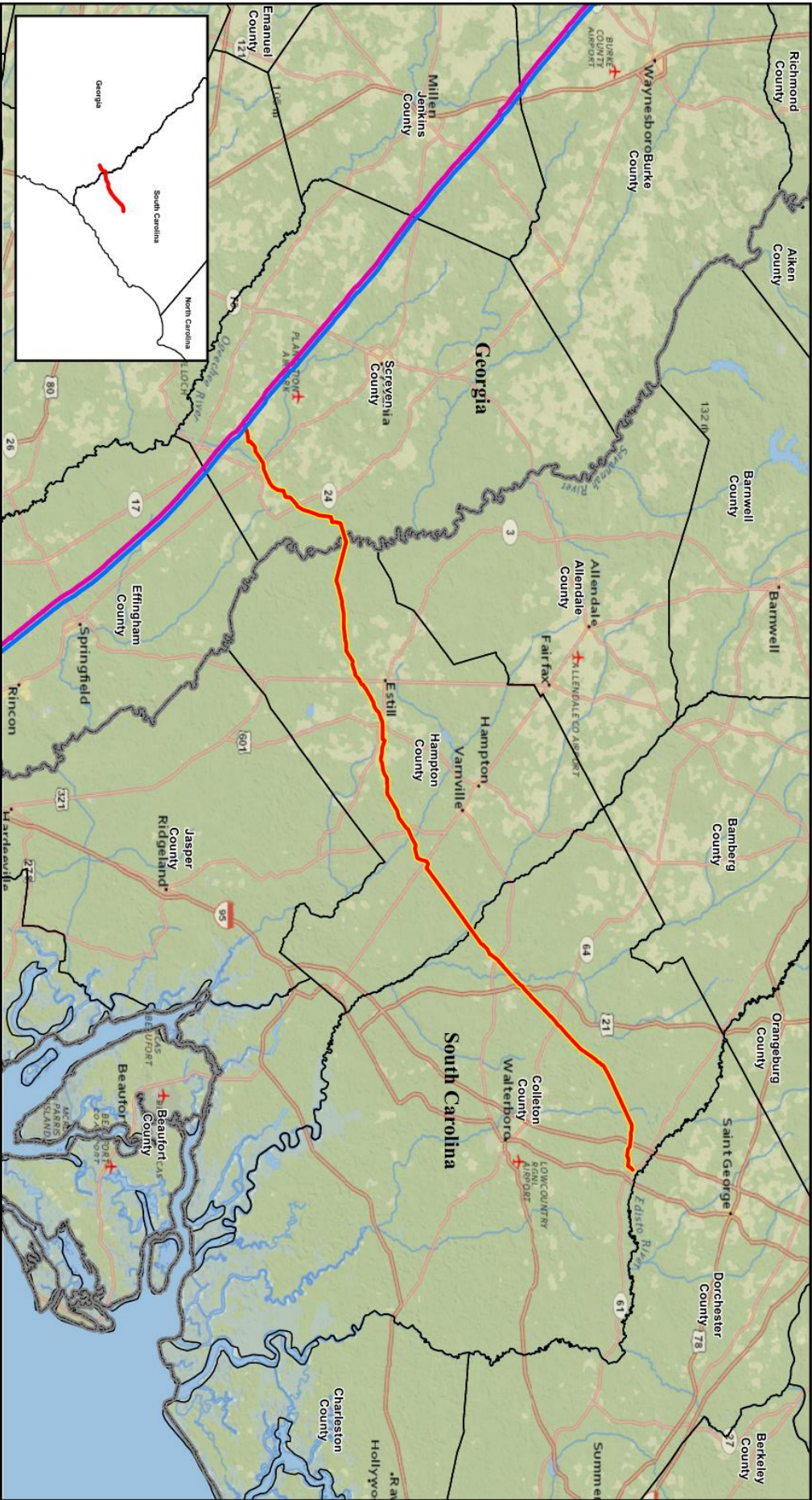
- Elba Express Company, LLC (EEC), a Kinder Morgan company, is developing the Bridge Project to serve increasing natural gas demand in South Carolina.
- The project is estimated to cost approximately \$431 million.
- The project includes the construction of approximately 71 miles of 30-inch diameter pipeline extending from EEC's existing pipeline system to Colleton County, South Carolina, along with new meter stations, and related facilities.
- Several federal and state regulatory agencies will review and have oversight of the project, including the Federal Energy Regulatory Commission (FERC), U.S. Army Corps of Engineers, U.S. Fish and Wildlife Service, Georgia Department of Natural Resources (includes Environmental Protection Division and the Historic Preservation Division), South Carolina Department of Natural Resources, South Carolina Department of Archives and History, and the South Carolina Department of Environmental Services.
- EEC intends to apply to FERC in the first quarter of 2027 for a certificate of public convenience and necessity to construct, operate, and maintain the proposed project. Prior to submitting the certificate application for the project, EEC intends to request the use of FERC's formal pre-filing process for the project in the second quarter of 2026.

Project Benefits:

- The project is a market driven response to increased demand for the transportation of natural gas to delivery points serving a new gas-fired power plant in Colleton County, South Carolina, and growing residential and commercial load. The project will provide critical reliability to the Southeastern energy grid.
- The project will serve this growing demand for natural gas in a cost-effective manner, while retaining the ability for expansion in the future through the addition of compression capabilities.
- Contractors are expected to rely on local businesses, housing, and support services during the construction period, providing a positive economic impact to the areas where the project will be constructed and operated.
- The project will contribute to the tax base in the counties it traverses.

Estimated Project Schedule:

- Agency and Stakeholder Meetings — Ongoing
- FERC Pre-Filing Initiation — Second Quarter 2026
- File Certificate Application with FERC and other Permit Applications — First Quarter 2027
- Begin Construction — Anticipated First Quarter 2029
- Proposed In-Service Date — Second Quarter 2030



Preliminary Project Location

Proposed Project Bridge Expansion
Screven County, Georgia
Hampton & Colleton Counties South Carolina

Elba Express Company, L.L.C.
a Kinder Morgan company