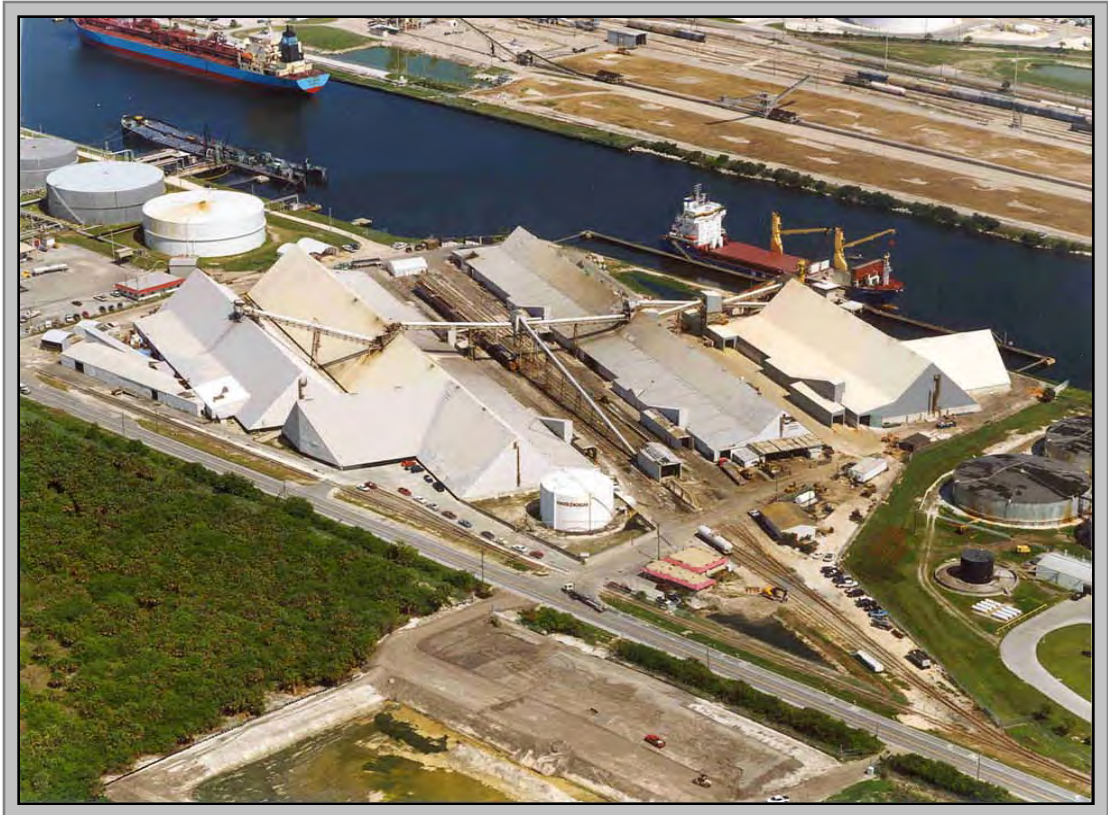


Port Sutton Terminal



Terminal Specifications

Size	16 acres
Storage Capacity	200,000 tons covered warehouse
No. of Barge Docks	700 ft. private dock; 34' MLW
Commodities Handled	Fertilizers, salt, ores, liquid chemicals, other

Transportation Modes

Servicing Body of Water	Port Sutton Channel
Servicing Railroads	CSX
Servicing Major Roadways	Interstates 4 and 75

Port Sutton Terminal

Terminal Services

- Vessel to Storage
- Storage to Rail to Storage
- Vessel to Truck
- Rail to Storage
- Storage to Truck
- Packaging

Major Features

- Segregated, Enclosed Out-loading Systems
- Certified Scales
- 4,000' of Private Rail Siding
- Four Cargo Storage Facilities

Terminal Addresses

Terminal Address

4310 Pendola Point Road

Tampa, FL 33619

813-248-1146

813-248-2802 Fax

Business Address

1500 Greenleaf Street

Charleston, SC 29405

843-853-0453

843-853-3367 Fax

