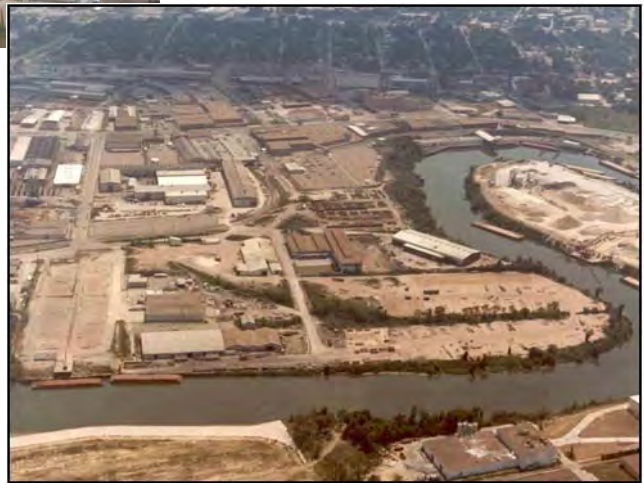


Kinder Morgan Texas Terminals (Houston, TX)



Terminal Specifications

Size	80 total acres
Total Storage Capacity	325,000 sq. ft. owned climate controlled covered storage 250,000 sq. ft. leased covered storage 31 acres open storage
Annual Tonnage:	1,000,000 tons
No. of Barge Docks	4 with a 10 ton overhead crane 1 - 20 ton overhead crane 1-150 ton crane and 1-250 ton crane
Commodities Handled	Steel coils, pipe, ferro alloys, semi-finished and finished steel products, and other bulk and break bulk products

Kinder Morgan Texas Terminals (Houston, TX)

Transportation Modes

Servicing Body of Water	Houston Ship Channel
Servicing Major Roadways	State Hwy. 225, I-10, I-610, I-45 and US 59
Rail Service	PTRA railroad (55 rail spots), UPRR (150 rail spots)

Terminal Services

- Barge Loading/Unloading
- Truck Loading/Unloading
- Rail Loading/Unloading
- Trucking
- Storage and Inventory Control
- Unit train to Truck Transloading
Union Pacific Mainline
- Climate Controlled Warehousing with overhead cranes
- Direct discharge from vessels at the PHA city docks and surrounding facilities (Greens Port, Woodhouse, Empire, Care Terminal, TX Terminals, Barbour’s Cut, etc.)

Contact Information

Terminal Address

9640 Clinton Drive
Houston, TX 77029
713-671-2881
713-671-0863 Fax

Terminal Manager

Chris Morgan

Regional Office

405 Clinton Drive
Houston, TX 77547
832-900-5058
713-450-0454 Fax

