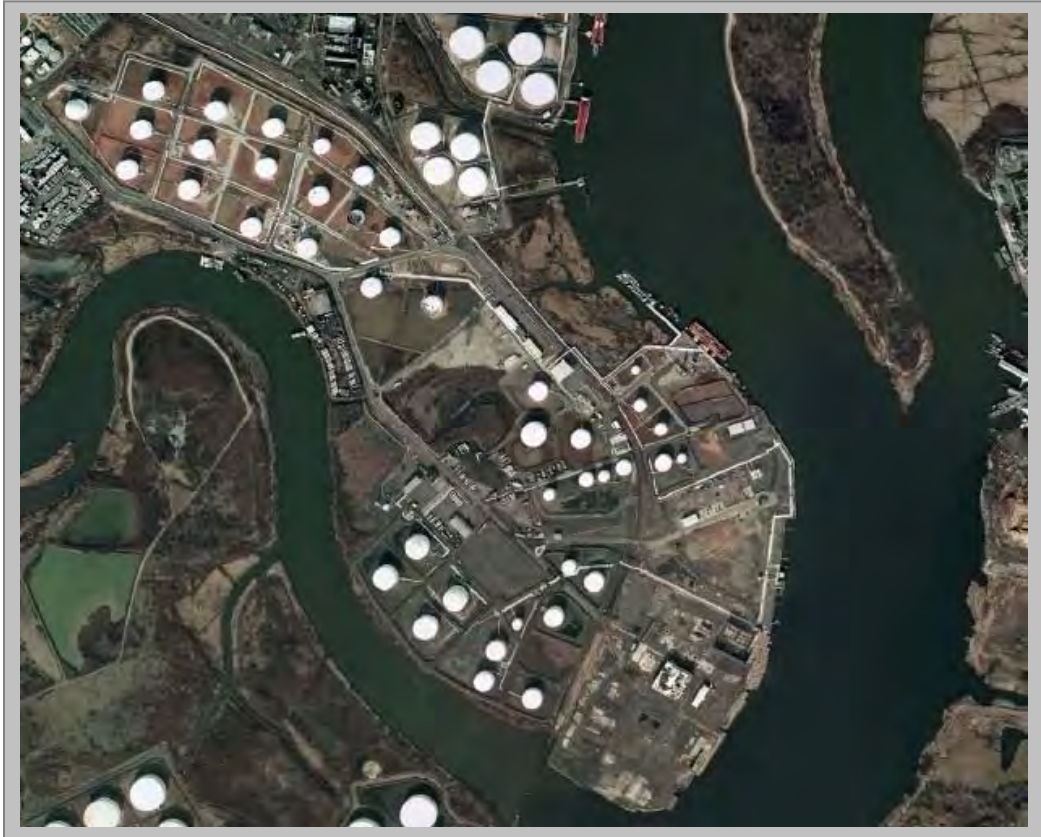


Linden, NJ



Terminal Specifications

Size	21.2 Acres
Storage Capacity	550,000 barrels nominal
No. of Railcar Spots	280
No. of Barge Docks	1 (27' Draft, 405 ft in length)
No. of Vessel Docks	1 (36' MLW Draft, 715 ft in length)
Commodities Handled	Ethanol

Transportation Modes

Servicing Body of Water	The Arthur Kill
Servicing Railroads	Norfolk Southern, CSX and Conrail
Servicing Pipeline	Dedicated line to Citgo Tremley Point
Servicing Major Roadways	NJ Interstate 95, New Jersey Turnpike

Linden, NJ

Terminal Services

- Automated Truck Rack
- Railcar Unloading
- Barge Loading / Unloading
- Vessel Unloading
- Marine offloading and denaturing
- Corrosion inhibitor additization
- Marine Vapor Recovery (10,000 barrels per hour)

Major Features

- Unit train terminalling (80 railcar trains)
- Automated card / key multi-lane high speed truck loading with customer allocation system
- Dedicated / segregated storage and pipeline system
- Inventory management with State of the Art Environmental Controls
- Dual berth loading / unloading with multiple manifold configuration
- Expandability to nearby terminals via pipeline connectivity

Contact Information

Terminal Address

4901 Tremley Point Rd
Linden, NJ 07036
908-862-4195
866-886-7868 Fax

Business Address

9590 New Decade Drive
Pasadena, TX 77507
281-291-3987
832-397-4306 Fax

